



Cognitive deficits and enhancements in youth from adverse conditions: An integrative assessment using Drift Diffusion Modeling in the ABCD study

Stefan Vermeent^{1,2}  | Ethan S. Young¹  | Meriah L. DeJoseph^{3,4}  |
Anna-Lena Schubert⁵  | Willem E. Frankenhuis^{1,2,6} 

¹Department of Psychology, Utrecht University, Utrecht, The Netherlands

²Max Planck Institute for the Study of Crime, Security, and Law, Freiburg, Germany

³Institute of Child Development, University of Minnesota, Minneapolis, Minnesota, USA

⁴Graduate School of Education, Stanford University, Stanford, California, USA

⁵Department of Psychology, University of Mainz, Mainz, Germany

⁶Evolutionary and Population Biology, Institute for Biodiversity and Ecosystem Dynamics, University of Amsterdam, Utrecht, Amsterdam, The Netherlands

Correspondence

Stefan Vermeent, Department of Psychology, Utrecht University, Heidelberglaan 1, 3584 CS Utrecht, The Netherlands.

Email: p.c.s.vermeent@gmail.com

Funding information

Dutch Research Council, Grant/Award Number: V1.Vidi.195.130; James S. McDonnell Foundation, Grant/Award Number: <https://doi.org/10.37717/220020502>; National Institute of Child Health and Human Development, Grant/Award Number: 1F32HD112065-01

Abstract

Childhood adversity can lead to cognitive deficits or enhancements, depending on many factors. Though progress has been made, two challenges prevent us from integrating and better understanding these patterns. First, studies commonly use and interpret raw performance differences, such as response times, which conflate different stages of cognitive processing. Second, most studies either isolate or aggregate abilities, obscuring the degree to which individual differences reflect task-general (shared) or task-specific (unique) processes. We addressed these challenges using Drift Diffusion Modeling (DDM) and structural equation modeling (SEM). Leveraging a large, representative sample of 9–10 year-olds from the Adolescent Brain Cognitive Development (ABCD) study, we examined how two forms of adversity—material deprivation and household threat—were associated with performance on tasks measuring processing speed, inhibition, attention shifting, and mental rotation. Using DDM, we decomposed performance on each task into three distinct stages of processing: speed of information uptake, response caution, and stimulus encoding/response execution. Using SEM, we isolated task-general and task-specific variances in each processing stage and estimated their associations with the two forms of adversity. Youth with more exposure to household threat (but not material deprivation) showed slower task-general processing speed, but showed intact task-specific abilities. In addition, youth with more exposure to household threat tended to respond more cautiously in general. These findings suggest that traditional assessments might overestimate the extent to which childhood adversity reduces specific abilities. By combining DDM and SEM approaches, we can develop a more nuanced understanding of how adversity affects different aspects of youth's cognitive performance.

KEYWORDS

adolescent Brain Cognitive Development (ABCD) study, adversity, cognitive deficits, cognitive enhancements, Drift Diffusion Modeling

This is an open access article under the terms of the [Creative Commons Attribution](https://creativecommons.org/licenses/by/4.0/) License, which permits use, distribution and reproduction in any medium, provided the original work is properly cited.

© 2024 The Authors. *Developmental Science* published by John Wiley & Sons Ltd.



Research Highlight

- To understand how childhood adversity shapes cognitive abilities, the field needs analytical approaches that can jointly document and explain patterns of lowered and enhanced performance.
- Using Drift Diffusion Modeling and Structural Equation Modeling, we analyzed associations between adversity and processing speed, inhibition, attention shifting, and mental rotation.
- Household threat, but not material deprivation, was mostly associated with slower task-general processing speed and more response caution. In contrast, task-specific abilities were largely intact.
- Researchers might overestimate the impact of childhood adversity on specific abilities and underestimate the impact on general processing speed and response caution using traditional measures.

1 | INTRODUCTION

The effects of early-life adversity—such as growing up in poverty or experiencing high levels of violence—on cognition are complex. There is a growing consensus that adversity-exposed youth may develop not only deficits, but also strengths. For example, studies find lowered and improved performance across different cognitive domains including (but not limited to) executive functioning, social cognition, language, and emotion (Ellis et al., 2022; Frankenhuus & Weerth, 2013; Frankenhuus et al., 2016; Sheridan & McLaughlin, 2014; Sheridan et al., 2022). Researchers focused on one type of effect or another acknowledge the importance of identifying both deficits and strengths. Yet, in practice, they often focus on one at the expense of the other. To develop an integrated, well-rounded, and nuanced understanding of how adversity shapes cognitive abilities, research must integrate both types of effects.

Such an integration of deficit- and strength-based approaches is hampered by two methodological challenges. First, most cognitive tasks involve different stages of processing which are obscured when analyzing raw performance differences. This makes it difficult to understand why cognitive performance may be lowered or improved. Second, adversity may lower or improve performance because it affects general processes (i.e., processes shared across many tasks) or abilities that are task-specific. In this Registered Report, we use a framework that tackles both challenges. First, we decompose raw performance into measures of different stages of cognitive processes through cognitive modeling. Second, we analyze four different tasks—tapping processing speed, attention shifting, inhibition, and mental rotation—all of which have documented associations with adversity. Finally, we model shared (i.e., task-general) and unique (i.e., task-specific) factors that drive performance and investigate how they are associated with adversity.

1.1 | What do deficit and enhancement patterns mean?

Both the deficit and strength-based literature often use speeded tasks, in which participants are usually instructed to respond as fast and accurate as possible. For example, performing well on inhibition tasks (e.g., Flanker task, Go/No-Go Task; Farah et al., 2006; Fields et al., 2021; Mezzacappa, 2004; Noble et al., 2005), attention shifting tasks (e.g., Dimensional Change Card Sort; Farah et al., 2006; Fields et al., 2021; Mittal et al., 2015; Noble et al., 2005; Nweze et al., 2021; Young et al., 2022), and stimulus detection tasks (Farah et al., 2006; Noble et al., 2005; Pollak, 2008) requires fast and accurate responses. In practice, performance is often quantified using aggregated indices of speed alone (e.g., RT), accuracy alone (e.g., proportion correct), or both independently (rather than in an integrated manner).

In both the deficit and strength-based literature, *task performance* (indexed by mean RTs or accuracy) is routinely equated with *cognitive ability*. For example, deficit-focused studies relate slower RTs on inhibition tasks to *worse inhibition ability* (Farah et al., 2006; Fields et al., 2021; Mezzacappa, 2004; Noble et al., 2005). Strength-based studies relate faster RTs on standard attention shifting tasks to *better shifting ability* (Fields et al., 2021; Mittal et al., 2015; Young et al., 2022). However, speed and accuracy comprise more than pure ability (e.g., inhibition, attention shifting). They also measure other constructs such as response caution (e.g., more or less cautious responding), speed of task preparation (e.g., orienting attention, encoding information), and speed of response execution. This heterogeneity creates an inferential risk, namely, if performance differences are interpreted as differences in abilities without sufficiently considering alternative explanations. In addition, the effect of adversity exposure may not be limited to a single

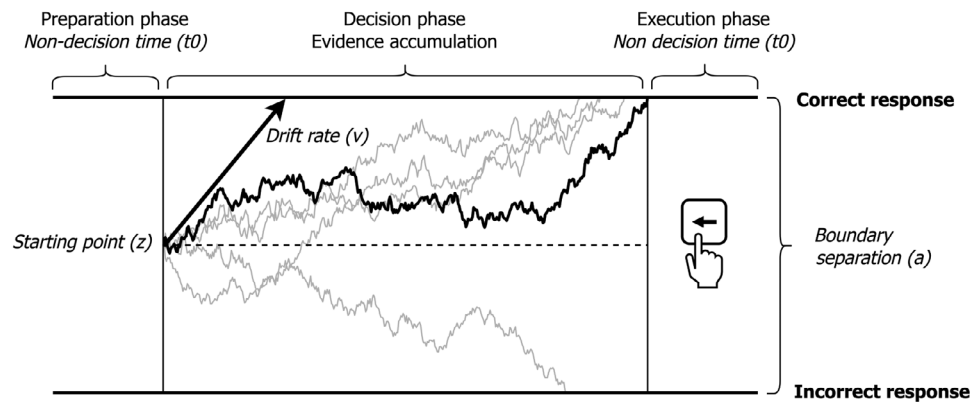


FIGURE 1 A visual overview of the Drift Diffusion Model (DDM). The DDM assumes that decision making on cognitive tasks with two forced response options advances through three stages. First, people go through a preparation phase in which they engage in initial stimulus encoding. Second, people gather information for one of two response options until the accumulation process terminates at one of the decision boundaries. Each squiggly line represents the evidence accumulation process on a single trial. Third, a motor response is triggered in the execution phase. The model estimates four parameters that reflect distinct cognitive processes (printed in *italic*): (1) The *drift rate* represents the rate at which evidence accumulation drifts toward the decision boundary and is a measure of processing speed; (2) The *non-decision time* represents the combined time spent on task preparation and response execution; (3) The *boundary separation* represents the width of the decision boundaries and is a measure of response caution; (4) The *starting point* represents the starting point of the decision process and can be used to model response biases (not considered in this study).

process. For example, a specific type of adversity could affect both the speed of information processing and also shape the strategy that a person uses. These inferential challenges have real-world implications, especially when raw performance is used as an early screening tool to assess cognitive abilities (Distefano et al., 2021).

One promising solution to these issues is leveraging cognitive measurement models developed by mathematical psychologists. For speeded binary decision tasks, a well-established measurement model is the Drift Diffusion Model (DDM; Forstmann et al., 2016; Ratcliff & McKoon, 2008; Ratcliff & Rouder, 1998; Wagenmakers, 2009). The DDM integrates speed and accuracy on a trial-by-trial level to estimate cognitive processes at different stages of the decision-making process. The DDM assumes that people go through three distinct phases on each trial (see Figure 1 for a visualization). The first phase, *preparation*, includes processes such as focusing attention and visually encoding the stimulus. In the second phase, *decision-making*, people gather evidence for both response options until the evidence sufficiently favors one option over the other (explained below) and the decision process terminates. The third phase, *execution*, involves preparing and executing the motor response corresponding to the choice.

DDM estimates a set of parameters¹ for each participant that represent each phase of the decision process (Voss et al., 2004). The *drift rate* (v) represents the speed of information uptake (Schmiedek et al., 2007; Voss et al., 2013). People with a higher drift rate are faster and make fewer errors. The *non-decision time* (t_0) includes initial preparatory processes (e.g., visually encoding the stimulus) and processes after the decision is made (e.g., pressing a button). All else being equal, longer non-decision times reflect slower information processing but without a cost nor benefit in accuracy. The *boundary separation* (a) represents the distance between the two decision boundaries. A larger boundary separation means more information is collected before making a decision.

Thus, boundary separation measures response caution. In contrast to non-decision time, larger boundary separation leads to slower but more accurate responses, reflecting a speed-accuracy tradeoff.

As mentioned earlier, adversity-related raw performance differences—both lowered and improved performance—are typically interpreted as differences in ability (e.g., inhibition, attention shifting). If these interpretations are accurate, then drift rate would reflect these variations. That is because improved ability would result in both decreased RTs and increased accuracy. However, if performance differences arise through other factors—such as differences in response caution or response speed—they would be captured by parameters other than the drift rate. Thus, disentangling the drift rate, non-decision time, and boundary separation enhances our understanding of how adversity-exposure is associated with performance.

1.2 | Are deficit and enhancement patterns task-specific or task-general?

An important caveat to interpreting task performance on any task in isolation is that performance on most tasks relies both on shared cognitive processes and unique abilities. For example, RTs on executive functioning tasks are substantially confounded with general processing efficiency (Frischkorn et al., 2019; Lerche et al., 2020; Löffler et al., 2022). Both task-specific abilities and task-general processes affect RTs and accuracy in similar ways and are thus likely confounded in drift rates. Task-general effects create the illusion that many different abilities are affected by adversity when in fact only one more general process is affected. Consider research on cognitive deficits. Adversity exposure might disrupt general cognitive processes shared



across many tasks, such as general processing speed, for example, because of its effects on brain regions that are involved across several cognitive abilities (Sheridan & McLaughlin, 2014). If so, studies analyzing raw Flanker performance in isolation will find processing speed deficits but wrongly interpret this as an inhibition deficit. Such distinctions matter for both deficit- and strength-based approaches (e.g., does adversity impair broad domains such as executive functioning? Does it enhance specific abilities such as attention shifting?), as well as for real-world interventions grounded in both approaches (e.g., school-based interventions targeting broad domains or specific abilities).

Structural equation modeling (SEM) can disentangle task-general and task-specific processes. For example, it can estimate shared task variance with latent task-general variables. By estimating shared variance across different tasks, we can also obtain more precise estimates of task-specific abilities (i.e., variance unique to specific tasks). Bignardi et al. (2023) recently applied this approach to model how socioeconomic status (SES) is related to standard performance measures in three large data sets. They used SEM to model the effect of SES on a general factor and task-specific residual variances. Lower SES was associated with a lower general ability, but enhanced task-specific processing speed, inhibition, and attention shifting. However, their analysis looked at shared and unique variance using raw performance measures. Thus, it is subject to the same limitations outlined in the previous section.

1.3 | The current study

Here, we analyzed the Adolescent Brain Cognitive Development (ABCD) study data (<http://abcdstudy.org>). The ABCD study is ideal because it provides a large, representative, and socioeconomically and ethnically diverse sample of 9–10 year-olds—an age range characterized by rapid growth in cognitive abilities (Blakemore & Choudhury, 2006).

We studied two dimensions of adversity: household threat and material deprivation. These forms of adversity have been widely studied in their relation to cognitive outcomes—from both deficit and strength-based perspectives (Fields et al., 2021; Schäfer et al., 2022; Sheridan et al., 2022; Young et al., 2022)—and are central to contemporary conceptualizations of adversity (e.g., McLaughlin et al., 2021; Sheridan & McLaughlin, 2014). Prior work has shown that cognitive deprivation is more strongly associated with lower cognitive performance than threat exposure (Salhi et al., 2021; Sheridan et al., 2020). Although material deprivation (as measured here) and cognitive deprivation (in previous studies) are not identical, both seem related to access to resources that support cognitive development (e.g., books in the home, formal education). Indeed, in the ABCD sample material deprivation is highly or moderately correlated with income (−0.81) and education (−0.56), while correlations with household threat are lower (−0.25 and −0.12, respectively; DeJoseph et al., 2022). Therefore, to the extent that the deprivation-versus-threat literature has captured ability-relevant processes, we may expect material deprivation to be more strongly associated with lower drift rates than threat exposure.

We analyzed four cognitive abilities that have been studied in relation to adversity. We included *attention shifting* because previous work has reported enhancement of this ability in children and (young) adults with more exposure to environmental unpredictability (based on raw performance switch costs; Fields et al., 2021; Mittal et al., 2015; Young et al., 2022; but see Nweze et al., 2021). Theoretically, attention shifting is thought to enable people to rapidly adjust to, and take advantage of, a changing environment (e.g., seize fleeting opportunities). We included *inhibition* because previous research suggests that children with more adverse experiences are worse at inhibiting distracting information (based on raw RT difference scores; Fields et al., 2021; Mezzacappa, 2004; Mittal et al., 2015; Tibu et al., 2016). We included *mental rotation* because previous studies have found negative associations between SES and mental rotation ability (based on RTs and accuracy; Assari, 2020; Bignardi et al., 2023). To the extent that these performance differences reflect differences in the respective abilities—as they have been interpreted—they should show up in *task-specific drift rates*. We also included a measure of *processing speed*, which was not measured in relation to adversity but provided a direct measure of the type of basic processing speed that plays a role in the other tasks. Taken together, the four tasks provided a broad assessment of cognitive domains, which makes them well-suited for isolating task-general processes. As all four tasks adhere to DDM assumptions, we could compare them based on the same model parameters.

Adaptation-based frameworks predict increased task-specific drift rates. This follows from the key assumption that adversity shapes specific abilities, rather than general cognitive processes (Ellis et al., 2022; Frankenhuus & Weerth, 2013; Frankenhuus et al., 2016, 2020). Task-specific enhancement in the attention-shifting drift rate would align with this assumption, as this ability is thought to be adaptive in changing environments; but enhancement in the task-general drift rate would not. One study reports evidence suggesting that exposure to threat but not deprivation is associated with better attention shifting (Young et al., 2022). If so, we should expect to see higher task-specific drift rates with household threat, but not with material deprivation. Enhanced task-specific drift rates on inhibition and mental rotation would be unexpected yet interesting. It would constitute novel documentation of enhancements, and would suggest that lowered raw performance reflects ability-irrelevant processes. Finally, equivalent drift rates across adversity levels would also not be consistent with strength-based frameworks; rather, such a pattern would suggest that abilities are intact (i.e., not affected by adversity).

Deficit perspectives can accommodate both lowered task-specific and lowered task-general drift rates. On the one hand, past work suggests that adversity impairs specific abilities (e.g., inhibition; Farah et al., 2006; Fields et al., 2021; Mezzacappa, 2004; Mittal et al., 2015). On the other hand, there is also evidence that adversity affects general cognitive ability (Bignardi et al., 2023)—perhaps through its broad effects on brain regions that are involved across several cognitive abilities (Sheridan & McLaughlin, 2014). However, equivalent or enhanced drift rates, whether they be task-specific or task-general, would not be consistent with deficit perspectives; rather, this would suggest that abilities are intact or enhanced.



Our approach adds value in a third way besides separating drift rate from ability-irrelevant factors and isolating task-specific and task-general effects: It allows us to quantify cognitive deficits and enhancements separately within the same model. This is because the task-specific and task-general estimates are statistically independent. Thus, for instance, we may find that adversity lowers general drift rate, as well as some task-specific drift rate (e.g., capturing inhibition), but increases other task-specific drift rates (e.g., capturing attention shifting).

If the drift rates we observe align with previous interpretations of performance differences as outlined above, our findings support existing theories about deficits and enhancements. However, if not drift rates, but non-decision time or boundary separation account for the existing findings, and drift rates do not, neither deficit- or adaptation-based frameworks are supported. This would at a minimum invite reflection—perhaps revision—of the evidence base for (parts of) these frameworks. At the same time, such findings would offer clear directions for future research in this field (e.g., which factors explain variation in non-decision times and/or boundary separation across levels of adversity). Thus, regardless of the specific pattern of outcomes, our analyses contribute to an accurate and refined understanding of how early-life adversity shapes cognitive abilities.

2 | METHODS

2.1 | Sample

The ABCD study (<http://abcdstudy.org>), is a prospective, longitudinal study of approximately 12,000 youth across the United States. We focused on the baseline assessment, which has the largest collection of cognitive tasks suitable for DDM (Luciana et al., 2018). There were four tasks: (1) Processing Speed Task (Pattern Comparison Processing Speed Task), (2) Attention Shifting Task (Dimensional Change Card Sort Task), (3) Inhibition Task (Flanker Task), and (4) Mental Rotation Task (Little Man Task). At baseline, the study included 11,878 youths (aged between 9 and 10 years old, measured in months) recruited across 21 sites. The study used multi-stage probability sampling to obtain a nationally representative sample (Heeringa et al., 2010). Baseline assessments were completed between September 1st 2016 and August 31st 2018 (see Garavan et al., 2018). Our analysis sample includes 10,687 participants who had trial-level data available on all four² cognitive tasks.

2.2 | Open science statement

All analysis scripts, materials, and instructions needed to reproduce the findings are available on the article's Github repository (https://stefanvermeent.github.io/abcd_ddm/). The raw study data cannot be shared on public repositories. Personal access to the ABCD dataset is required to fully reproduce our analyses and can be requested at <https://nda.nih.gov>.

We obtained access to the full ABCD data repository and performed initial data cleaning and analyses *prior* to Stage 1 submission. However, we preprocessed cognitive task data in isolation to prevent biasing the analyses involving independent variables. The goal of these analyses was to assure that the pre-selected cognitive tasks adhered to basic DDM assumptions and had the required trial-level data available in the right format. These initial analyses were preregistered. (https://stefanvermeent.github.io/abcd_ddm/preregistrations/README.html)

To increase transparency, we developed an automated workflow (using R and Git) to track the data files read into the analysis environment. First-time access to any data file was automatically tracked via Git, providing an overview including the timestamp, a description of the data, and the R code that was used to read in the data. The supplemental materials provide a detailed description and visual overview of this workflow. An overview of the data access history is provided in the repository's README file (https://stefanvermeent.github.io/abcd_ddm/).

2.3 | Exclusion criteria

For the cognitive task data, we applied exclusion criteria in two steps: first, cleaning trial-level data, and second, removing participants with problematic trial-level data (discussed below). For both, most criteria were as preregistered, but a few deviated from or were additional to the preregistration. The data processing steps described below were preregistered unless noted otherwise.

First, we removed RTs of the Attention Shifting, Flanker, and Mental Rotation Tasks that exceeded maximum task-specific RT thresholds (>10 s (0.07%), >10 s (0.04%), and >5 s ($< 0.01\%$ of trials), respectively). The Processing Speed Task did not have a programmed time-out. Instead, we cut-off responses >10 s (0.15% of trials) to remove extreme outliers. This step was not preregistered as we did not anticipate these extreme outliers.

Next, we removed trials with: (1) RTs <300 ms (ranging from 0.01% to 1.03% of trials across tasks); (2) RTs > 3 SD above the participant-level average log-transformed mean RT (ranging from 0.02% to 0.85% of trials across tasks; the same thing was done for RTs < 3 SD on the Processing Speed Task (not preregistered) to remove several fast outliers); (3) trials with missing response times and/or accuracy data ($<0.01\%$ for all tasks except Mental Rotation). We found that the response time-out of 5 s on the Mental Rotation Task led to missing responses on 10.55% of trials. This truncated the right-hand tail of the RT distribution, which can bias DDM estimation. Therefore, we decided to impute these values during DDM estimation instead of removing them (see the Supplemental materials for more information).

Next, we excluded participants who (1) had suffered possible mild traumatic brain injury or worse ($n = 118$); (2) showed a response bias of $>80\%$ on a task (ranging between 0 and 212; deviating from the preregistration); (3) had a low number of trials left after trial-level exclusions, defined as <20 trials for Mental Rotation and Attention Shifting ($n = 0$ and 19, respectively) and <15 trials for Flanker and Processing Speed ($n = 64$ and 34, respectively), deviating from the

TABLE 1 Descriptive statistics for the training and test set.

	Training	Test
N	1500	9063
Sex (%)	48.7	47.6
Age (mean (SD))	119 (7.5)	119 (7.4)
Parent highest education in years (mean (SD))	20.3 (2.4)	20.3 (2.4)
Race		
White (%)	53.5	55.6
Black (%)	16.6	16.1
Hispanic (%)	16.9	15.6
Other (mixed, Asian, AIAN, NHPI)	12.9	12.7
Income-to-needs (mean (SD))	3.8 (2.4)	3.7 (2.4)

preregistration). Finally, we excluded task data of several participants based on data inspection (not preregistered): two participants with 0% accuracy on the Mental Rotation Task; two participants who showed a sharp decline in accuracy over time on the Processing Speed Task; 49 participants on the Attention Shifting Task who (almost) only made switches across all trials, even on repeat trials. We also decided to include participants with missing data on one or more tasks because our main analyses used FIML for missing data.

The final sample consisted of 10,563 participants (See Table 1).

2.4 | Measures

2.4.1 | Cognitive tasks

Inhibition task. The NIH Toolbox Flanker task is a measure of cognitive control and attention (Zelazo et al., 2014). On each trial, participants saw five arrows that were positioned side-by-side. The four flanking arrows always pointed in the same direction, either left or right. The central arrow either pointed in the same direction (congruent trials) or in the opposite direction (incongruent trials). Participants were instructed to always ignore the flanking arrows and to indicate whether the central arrow pointed left or right. After four practice trials, participants completed 20 test trials, of which 12 were congruent ($\text{Mean}_{RT} = 0.84$ s, $\text{SD} = 0.28$) and eight were incongruent ($\text{Mean}_{RT} = 1.02$ s, $\text{SD} = 0.44$). The standard outcome measure is a normative composite of accuracy and RT. For more information on the exact calculation, see Slotkin et al. (2012).

Processing speed task. The NIH Toolbox Pattern Comparison Processing Speed task (Carlozzi et al., 2015) is a measure of visual processing. On each trial, participants saw two images and judged whether the images were the same or different. When images were different, they varied on one of three dimensions: color, adding or taking something away, or containing more or less of a particular item. The standard outcome measure is the number of items answered correctly in 90 s (normalized). On average, participants completed 38.96 trials ($\text{Mean}_{RT} = 2.24$ s, $\text{SD} = 0.47$).

Attention shifting task. The NIH Toolbox Dimensional Change Card Sort Task is a measure of attention shifting or cognitive flexibility (Zelazo, 2006; Zelazo et al., 2014). A white rabbit and green boat were presented at the bottom of the screen. Participants matched a third object to the rabbit or boat based on either color or shape. After eight practice trials, participants completed 30 test trials alternating between shape and color in pseudo-random order. Of these, 23 were *repeat* trials (i.e., the sorting rule was the same as on the previous trial; $\text{Mean}_{RT} = 1$ s, $\text{SD} = 0.36$) and 7 were *switch* trials (i.e., the sorting rule was different than on the previous trial; $\text{Mean}_{RT} = 1.03$ s, $\text{SD} = 0.39$). The standard outcome measure is a normative composite of accuracy and RT. For more information on the exact calculation, see Slotkin et al. (2012).

Mental rotation task. The Little Man task (referred to in this article as the Mental Rotation task) is a measure of visual-spatial processing (Luciana et al., 2018). Participants saw a simple picture of a male figure holding a briefcase in his left or right hand. They had to indicate whether the briefcase was in the left or right hand. The image could have one of four orientations: right side up or upside down, and facing toward or away from the participant. Thus, on half of the trials, participants had to mentally rotate the image in order to make the decision. Participants first completed three practice trials and then completed 32 test trials ($\text{Mean}_{RT} = 2.65$, $\text{SD} = 0.47$). The standard outcome measure is an efficiency measure, calculated as the percentage correct divided by the average RT.

2.4.2 | Adversity measures

Material deprivation. We assessed material deprivation with seven items from the parent-reported ABCD Demographics Questionnaire. These items originated from the Parent-Reported Financial Adversity Questionnaire (Diemer et al., 2013). The items assess whether or not (1 = Yes, 0 = No) the youth's family experienced several economic hardships over the 12 months prior to the assessment (e.g., 'Needed food but couldn't afford to buy it or couldn't afford to go out to get it').

We used a previously created factor score of this measure derived from MNLFA (Bauer, 2017). This score empirically adjusts for measurement non-invariance across sociodemographic characteristics and creates person-specific factor scores that enhance measurement precision and individual variation (Curran et al., 2014). In short, MNLFA scores assume a common scale of measurement across groups and age, as well as adjust for measurement biases that would have otherwise biased our substantive analyses. DeJoseph et al. (2022) describe how this score was computed. Higher scores indicate more material deprivation.

Household threat. We assessed threat experienced in the youth's home using the Family Conflict subscale of the ABCD Family Environment Scale (Moos, 1994; Zucker et al., 2018). The subscale consisted of nine items assessing conflict with family members (e.g., 'We fight a lot in our family'). Items were endorsed with either 1 (True) or 0 (False). Two items were positively valenced and were therefore reverse-scored. Similar to material deprivation, we used a previously-created factor



score of this measure derived from MNLFA (DeJoseph et al., 2022). Higher scores indicate more threat exposure.

Sociodemographic covariates. Several sociodemographic covariates were included in the SEM models (see Primary Analyses) that used the MNLFA scores representing material deprivation and household threat exposure. This is because MNLFA scores are adjusted for these covariates. Thus, it is recommended that variation in these covariates is also adjusted for in dependent variables (Bauer, 2017).

We calculated income-to-needs ratios by first taking the average of each binned income (<\$5000, \$5000–\$11,999, \$12,000–\$15,999, \$16,000–\$24,999, \$25,000–\$34,999, \$35,000–\$49,999, \$50,000–\$74,999, \$75,000–\$99,999, \$100,000–\$199,999, ≥\$200,000) as a rough approximation of the family's total reported income. Then we divided income by the federal poverty threshold for the year at which a family was interviewed (range = \$12,486–\$50,681), adjusted for the number of persons in the home. We used highest education (in years) out of the two caregivers (or one if a second caregiver was not provided) as a continuous variable. We collapsed youth race into four levels (White, Black, Hispanic, Other) and subsequently dummy-coded with White (the most numerous racial group) serving as the reference category in all models. We dichotomized youth sex such that 1 = Female and 0 = Male. We used youth age (in months) as a continuous variable and centered on the mean.

2.5 | Analysis pipeline

2.5.1 | Primary analyses

The approved Stage 1 Protocol for this manuscript can be found on the Open Science Framework (<https://osf.io/4n8qr>). Before conducting analyses, we split the full sample up in a training set ($n = 1,500$) and a test set ($n \approx 8,500$). We conducted our main analyses in three steps (see Figure 2): (1) fitting the DDM to the cognitive task data; (2) fitting the SEM model to the adversity and DDM data and optimize it where necessary based on the training set; (3) refitting the model to the test data and interpret the regression coefficients. We conducted a simulation-based power analysis based on the main SEM model (see Figure S2), with standardized regression coefficients of 0.06, 0.08, and 0.1 and the alpha level set to 0.05. The analysis indicated that we would have more than 90% power for all regression paths with N between 2500 ($\beta = 0.1$) and 6500 ($\beta = 0.06$).

All analyses were conducted in R 4.2.1 (R Core team, 2021). The source code can be found on the Github repository (https://stefanvermeent.github.io/abcd_ddm/scripts/README.html).

Step 1: DDM estimation. The DDM was fit to each cognitive task in a hierarchical Bayesian framework which estimates DDM parameters both on the individual and group level (Vandekerckhove et al., 2011; Wiecki et al., 2013). We used code provided by Johnson et al. (2017). The benefit of this approach is that group-level information is leveraged to estimate individual-level estimates. This differs from classic DDM estimation approaches where the model is fitted to the data of each participant separately (Voss et al., 2013). This is particularly useful

in developmental samples like the ABCD dataset which have a limited number of trials per participant but substantially larger sample sizes than is typical in the DDM literature.³

All models freely estimated the drift rate, non-decision time, and boundary separation while constraining response bias to 0.5 (i.e., assuming no bias toward a particular response option). For the Flanker and Attention Shifting Task, we compared model versions that separately estimated drift rate and non-decision-time per task condition or collapsed across conditions. Boundary separation was constrained to be the same across conditions. For the Processing Speed Task and the Mental Rotation Task, we estimated DDM parameters across all trials. The best-fitting model of each task was used to estimate participant-level DDM parameters. See the supplement for more information about model fitting procedures.

Step 2: Model optimization in training set. We first estimated and (where necessary) optimized the SEM in the training set using the *lavaan* package (Rosseel, 2012). The goal of this step was to investigate whether we needed to adjust the model specification in any way (e.g., add residual correlations, introduce or reduce constraints of factor loadings, etc.) to achieve good model fit. For this reason, the model fitted in this step was not interpreted to address our research aims.

See Figure 3 for the a-priori specification of the model. In the measurement model, all three DDM parameters across all tasks (i.e., drift rates, non-decision times, and boundary separations) loaded on separate latent factors for each parameter type. Unique (residual) variances of the manifest (i.e., measured) DDM parameters were captured in additional latent factors (one per parameter). The structural model estimated regression paths going from each adversity measure (see Adversity measures) to the general latent factors and to the unique variances of the DDM parameters of each task. For model identification reasons, we did not estimate regression paths to the unique variances of the Processing Speed Task. We first estimated and optimized the measurement models separately for each diffusion model parameter, which allowed us to efficiently detect sources of potential badness of fit. Once measurement models provided an adequate account of the data, we integrated them into the structural model shown in Figure 3. In addition, clustering of siblings and twins within families was accounted for using the *lavaan.survey* package (Oberski, 2014). Finally, the sociodemographic covariates that were included in the MNLFA scores (see Measures section above) were controlled for in the SEM. Goodness-of-fit was assessed using the root mean square error of approximation (RMSEA) and the comparative fit index (CFI). Following Hu and Bentler (1999), CFI values >0.90 and RMSEA values <0.08 were interpreted as acceptable model fit and CFI values >0.95 and RMSEA values ≤0.06 as good model fit.

Step 3: Model validation in test set. After optimizing the model based on the training set, we refit it to the test data. Model fit was assessed the same way as at Step 2. The regression coefficients of these models were interpreted to address our research questions. We controlled for multiple testing in the regression paths based on the false discovery rate (Benjamini & Hochberg, 1995; Cribbie, 2007). We did so separately for tests involving drift rates, non-decision times, and boundary separations, as we had different hypotheses for each of these

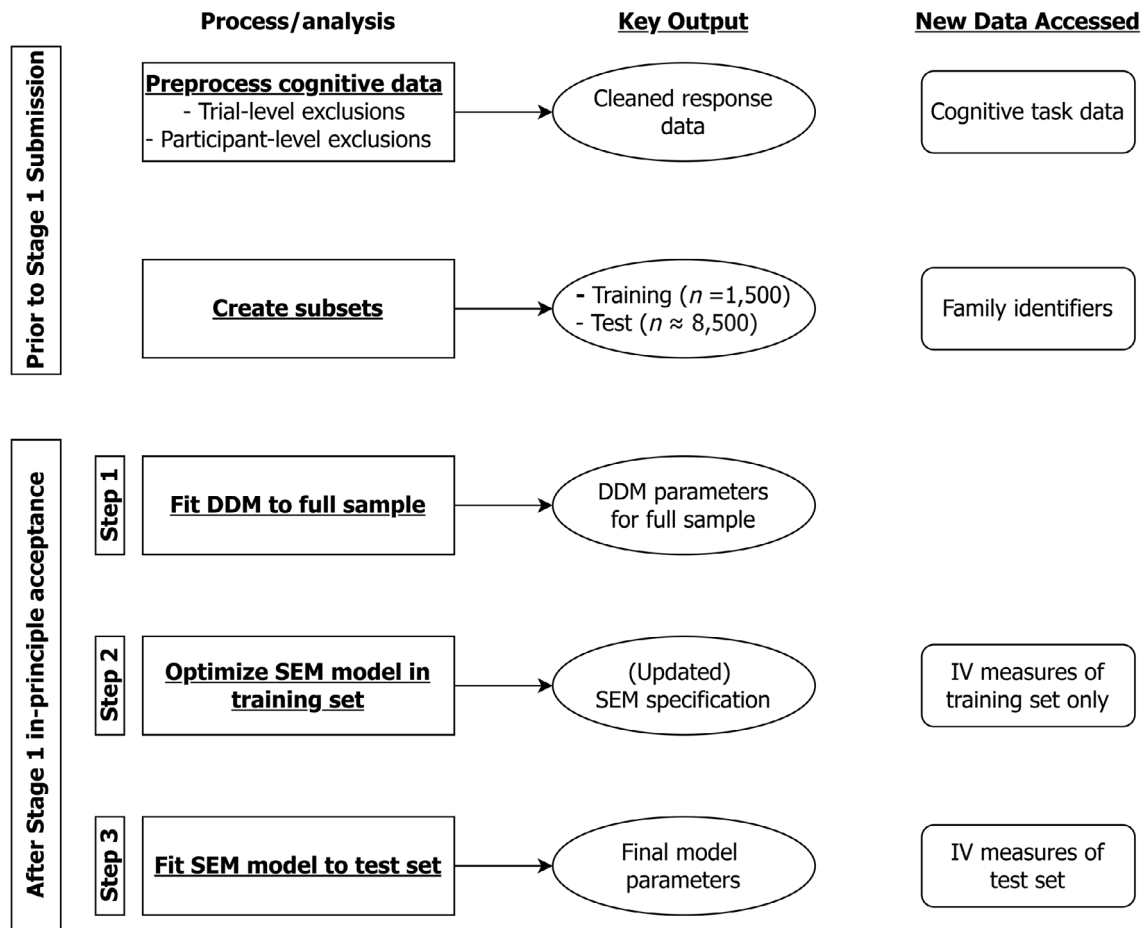


FIGURE 2 Visual overview of the full analysis workflow. Analyses were done in two stages: (1) prior to Stage 1 submission of the manuscript and (2) after Stage 1 in-principle acceptance. Analyses prior to Stage 1 only focused on the cognitive task data. Independent variables (i.e., threat and deprivation measures) were only accessed during Stage 2 after all DDM models were fit, and only for the test set after the model had been optimized based on the training set. Data access was tracked via the GitHub repository. DDM, Drift Diffusion Model; IV, independent variable; SEM, structural equation modeling.

parameters. In addition, we were interested in determining if standardized effects that fell between -0.10 and 0.10 were consistent with an actual null effect. For regression coefficients falling within these bounds, we therefore used two one-sided tests (TOST) equivalence testing using -0.10 and 0.10 as bounds.

3 | RESULTS

3.1 | Model fit

3.1.1 | DDM

Based on an assessment of model fit, we selected the following good-fitting DDM models for the substantive analysis: 1) *Mental Rotation Task*, the standard model; 2) *Inhibition Task*, the standard model with one set of parameter estimates across conditions; 3) *Attention Shifting Task*, the standard model with one set of parameter estimates across conditions; 4) *Processing Speed Task*, the standard model, but

with RTs < 1 s excluded to solve issues with fast outliers. See the supplemental materials for a full overview of the DDM fitting results.

The preregistered simulation-based model fit analysis yielded four (out of 16) correlations between observed and simulated RTs/accuracy that fell below the 0.80 cut-off: accuracies for Inhibition (0.79), Attention Shifting (0.73), Processing Speed (0.65), and the 75th percentile of RTs for Mental Rotation (0.76). However, further analyses showed that all correlations were >0.80 when we simulated 100 trials for each task, instead of the same number of trials as the real data. This suggested that the low correlations did not indicate bad parameter recovery, but rather a limitation in the preregistered procedure. Therefore, we decided against further changes to the models or the removal of data points. We provide more details about the model fit procedure, as well as the nature and reason of the deviation, in the supplemental materials (as well as the model fit results for the preregistered and updated approach).

Table 2 shows bivariate correlations between DDM parameters and adversity measures. Both material deprivation and household threat showed small, negative associations with drift rates across all four

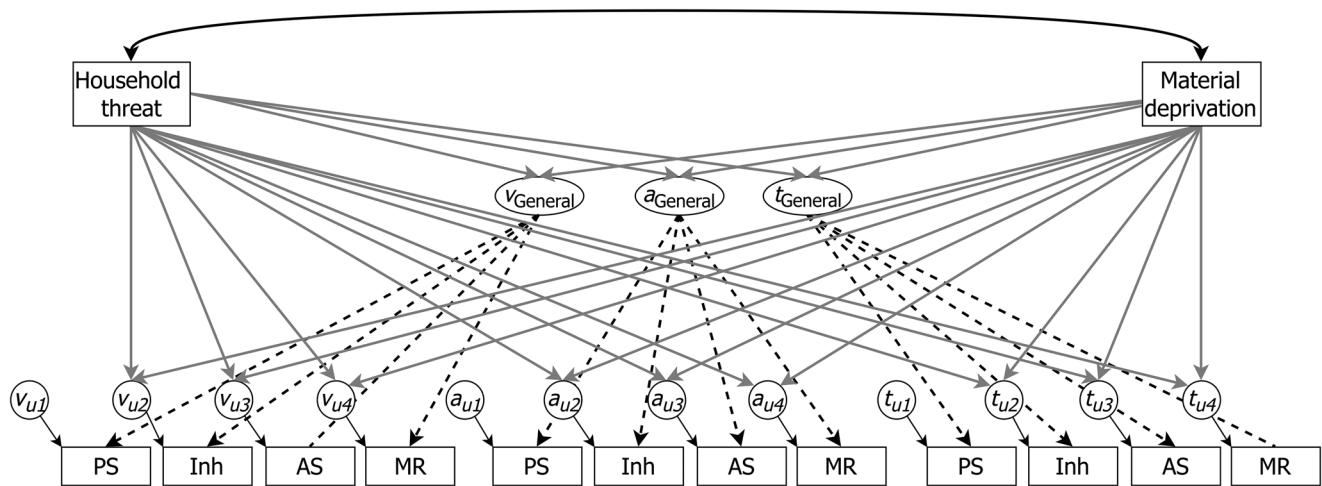


FIGURE 3 Visualization of the full structural equation model (SEM). Rectangles represent manifest indicators. Ellipses represent task-general factors. Circles represent task-specific (residual) variances. bi-directional arrows represent covariances. Dashed black lines represent factor loadings. Solid grey lines represent regression paths. The factor loadings to each of the Processing Speed Task indicators are fixed to 1. The factor loadings of the task-specific factors are fixed to 1 and the residual variances of the manifest indicators are fixed to 0. For model identification reasons, we do not estimate regression paths to the unique variances of the Processing Speed Task. Not shown in this Figure to improve readability: (1) the sociodemographic covariates that are included in the MNLFA scores (see Measures section); (2) covariances between the task-general factors and the task-specific factors within each task. $a_{General}$, Task-general boundary separation; a_u , Task-specific boundary separation; AS, Attention Shifting Task; Inh, Inhibition Task; MR, Mental Rotation Task; PS, Processing Speed Task; $t_{General}$, Task-general non-decision time; t_u , Task-specific non-decision time; $v_{General}$, Task-general drift rate; v_u , Task-specific drift rate.

tasks, suggesting that participants with more adversity exposure processed information more slowly. In addition, both material deprivation and household threat were positively associated with boundary separation (indicating more response caution) in all tasks except Mental Rotation, although most of these correlations were very small. Finally, material deprivation and household threat showed a small, negative correlation with non-decision times on the Mental Rotation Task, but not with non-decision times on the other tasks.

3.1.2 | SEM

The SEM model was incrementally constructed in the training data in order to detect any parts that might need adjustment. All parts of the model provided an acceptable to good account of the training data (full training model: CFI = 0.98, RMSEA = 0.04). Therefore, we did not make any adjustments to the model before applying it to the test data ($N = 9063$). The full model also provided a good account of the test data (CFI = 0.98, RMSEA = 0.05).

Figure 4 presents a simplified overview of the measurement part of the final model in the test data (excluding task-specific covariances and regression paths involving the adversity measures). The factor loadings of the Mental Rotation Task were low for all DDM parameters, suggesting that performance on this task differs substantially from performance on the other tasks. All tasks showed a statistically significant portion of task-specific variance after accounting for task-general effects. Task-general drift rate and task-general boundary separation were negatively correlated ($r = -0.57$), while task-general

boundary separation and task-general non-decision time were positively correlated ($r = 0.71$). These findings show that youth who processed information faster were less cautious in decision-making than those who processed information more slowly, and that more cautious youth were slower in executing non-decision processes (e.g., encoding, response execution) than less cautious youth. Task-specific correlations between DDM parameters of the same tasks ranged between $r = 0.02$ and $r = 0.34$.

3.2 | Primary analysis

Our primary analysis examined to what extent household threat and material deprivation were associated with task-specific and task-general aspects of speed of information processing (drift rates), response caution (boundary separations), and task preparation/execution (non-decision times). Task-general effects capture variance shared across tasks, whereas task-specific effects capture variance unique to specific tasks. The results are summarized in Figure 5.

For household threat, we found a significant negative association with task-general drift rate ($\beta = -0.12$, 95% CI = $[-0.16, -0.08]$, $p < 0.001$), indicating that participants with more exposure to household threat processed information more slowly in general. All task-specific drift rates were practically equivalent at different levels of household threat. We also found a significant positive association between household threat and task-general boundary separation ($\beta = 0.08$, 95% CI = $[0.04, 0.12]$, $p < 0.001$), indicating that participants



TABLE 2 Bivariate correlations between DDM parameters and measures of adversity.

	1	2	3	4	5	6	7	8	9	10	11	12	13	14
Drift rate														
1. Inh.	-													
2. Att. Shift.	0.43	-												
3. Men. Rot.	0.27	0.30	-											
4. Proc. Speed	0.31	0.39	0.19	-										
Boundary separation														
5. Inh.	-0.28	-0.12	-0.08	-0.12	-									
6. Att. Shift.	-0.40	-0.36	-0.14	-0.26	0.47	-								
7. Men. Rot.	0.00	0.01	0.29	-0.05	0.06	0.09	-							
8. Proc. Speed	-0.29	-0.23	-0.11	-0.28	0.33	0.42	0.11	-						
Non-decision time														
9. Inh.	-0.03	0.05	-0.00	0.02	0.52	0.33	0.05	0.23	-					
10. Att. Shift.	-0.07	0.02	-0.05	-0.02	0.34	0.21	0.03	0.20	0.40	-				
11. Men. Rot.	0.15	0.21	0.27	0.12	0.08	0.01	0.14	0.04	0.19	0.16	-			
12. Proc. Speed	-0.07	-0.02	-0.07	0.01	0.26	0.20	0.02	0.12	0.28	0.30	0.16	-		
Adversity														
13. Mat. Dep.	-0.19	-0.23	-0.21	-0.11	0.06	0.14	-0.08	0.11	-0.00	0.00	-0.14	-0.02	-	
14. Househ. Thr.	-0.12	-0.15	-0.10	-0.10	0.02	0.06	-0.03	0.07	-0.03	-0.02	-0.08	-0.02	0.26	-
Mean	2.91	1.49	0.25	1.47	2.95	2.12	2.88	2.89	0.34	0.33	1.15	1.22	0.05	-0.06
SD	0.87	0.39	0.26	0.38	0.41	0.45	0.44	0.47	0.08	0.08	0.28	0.14	1.05	0.83
Skew	-0.25	-0.21	0.58	0.18	-0.10	0.25	-0.49	-0.15	0.06	0.44	-0.30	-0.06	0.73	0.52
Kurtosis	-0.28	0.05	0.02	-0.18	0.53	-0.13	0.28	-0.36	-0.41	-0.21	0.35	0.03	0.11	-0.57

Abbreviations: Att. Shift., Attention Shifting Task; Househ. Thr., Household Threat; Inh., Inhibition Task; Mat. Dep., Material Deprivation; Men. Rot., Mental Rotation Task; Proc. Speed, Processing Speed Task.

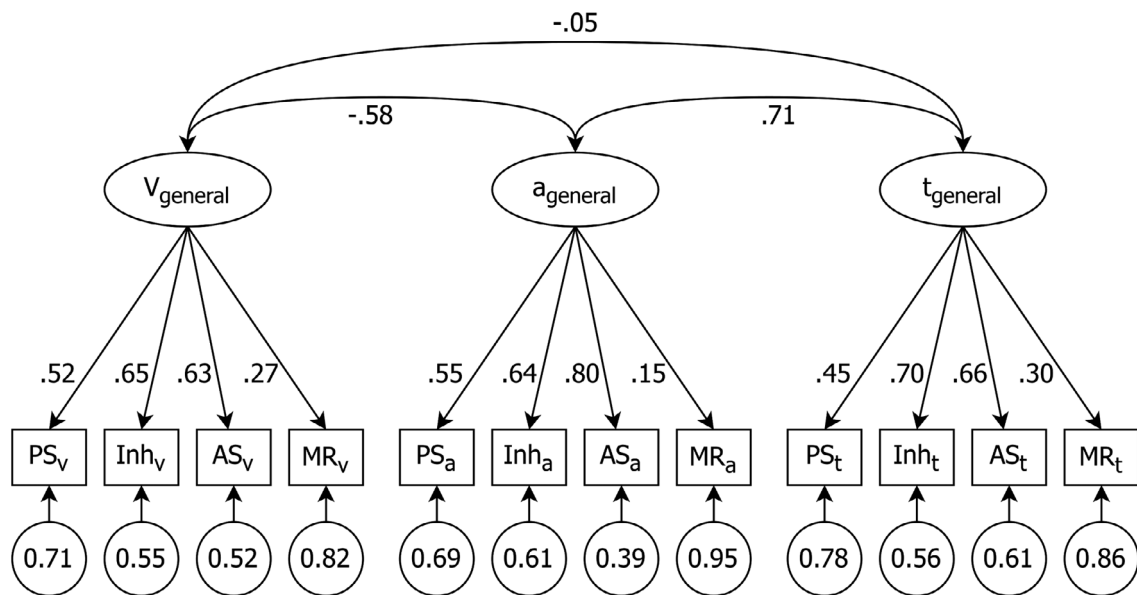


FIGURE 4 Simplified overview of the measurement part of the final SEM model, including standardized factor loadings, unstandardized residual variances, and correlations between the general latent factors. Excluding task-specific residual covariances and regression paths (see Figure 5). The rectangles represent manifest indicators. The ellipses represent latent task-general factors. The circles represent latent task-specific factors. *a*, Boundary separation; AS, Attention Shifting Task; Inh, Inhibition Task; MR, Mental Rotation Task; PS, Processing Speed Task; *t*₀, Non-decision time; *v*, Drift rate.

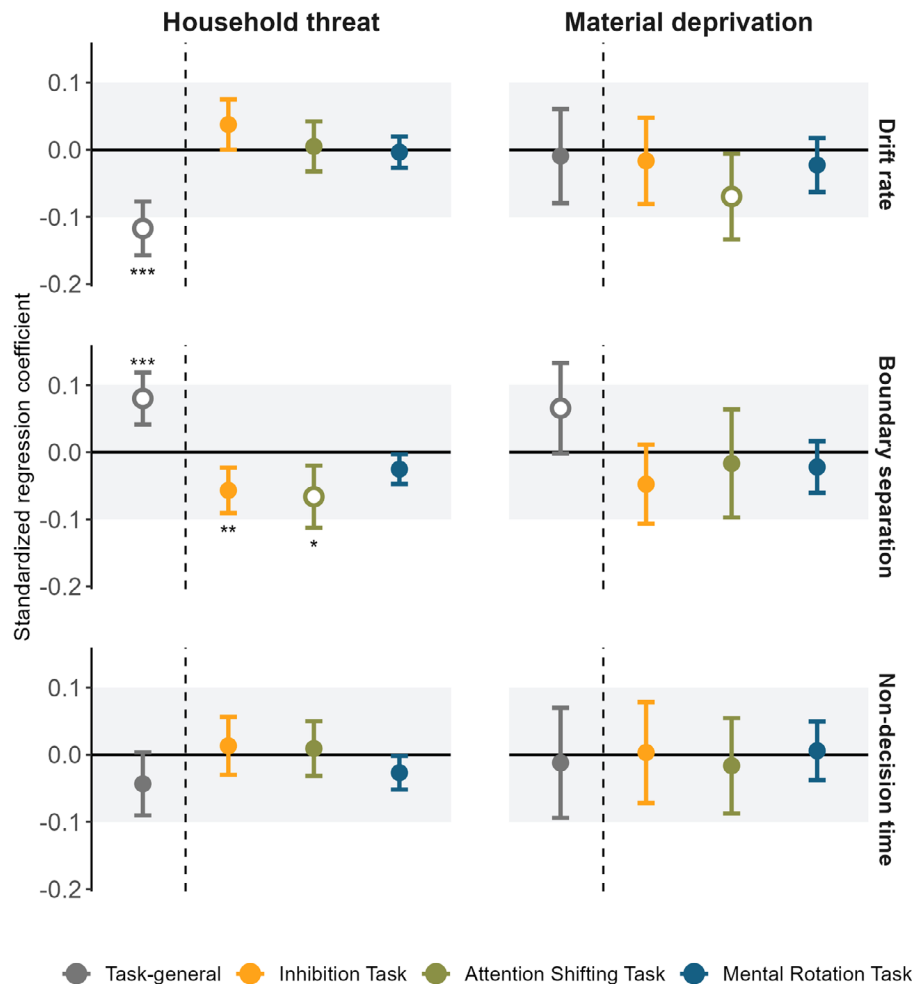


FIGURE 5 Results of the structural part of the SEM model testing the effect of household threat and material deprivation on task-specific and task-general DDM parameters. The top row plots the drift rates, the middle row plots the boundary separations, and the bottom row plots the non-decision times. The gray area reflects the area of practical equivalence. Hollow points indicate effects outside the area of practical equivalence. Solid points indicate effects inside the area of practical equivalence. Standard-errors represent 95% confidence intervals. Statistical significance (tested against zero) is indicated with significance asterisks. * $p < 0.05$, ** $p < 0.01$, *** $p < 0.001$.

with more exposure to household threat generally responded with more caution. In contrast, we found a negative association between household threat and task-specific boundary separation in the Attention Shifting Task ($\beta = -0.07$, 95% CI = $[-0.11, -0.02]$, $p = 0.013$), indicating that participants with more exposure to household threat responded with less caution in this task. The association between household threat and task-specific boundary separation on the Inhibition Task was also significant, but fell in the region of practical equivalence. Both task-general non-decision time and task-specific non-decision times were practically equivalent at different levels of household threat.

For material deprivation, the associations with task-general drift rate, as well as with all task-specific drift rates, were not significantly different from zero. We found evidence for practical equivalence for task-general drift rate and the task-specific drift rates of the Inhibition Task and the Mental Rotation Task. However, we did not find evidence for practical equivalence for the task-specific drift rate of Attention Shifting, suggesting that participants with higher levels of

material deprivation might be somewhat slower at shifting attention. The association between material deprivation and task-general boundary separation was neither significantly different from zero ($\beta = 0.07$, 95% CI = $[-0.00, 0.13]$, $p = 0.091$), nor practically equivalent ($p = 0.159$). Thus, participants with more exposure to material deprivation might generally respond with somewhat more caution, but the effect size of this relationship is likely not meaningful. All of the task-specific boundary separations were practically equivalent at different levels of material deprivation. Both task-general non-decision time and task-specific non-decision times were practically equivalent at different levels of material deprivation.

3.3 | Exploratory analysis

To situate our primary analysis in the context of the broader literature based on raw performance measures, we decided to run a similar SEM model based on raw performance measures of the four cognitive tasks.

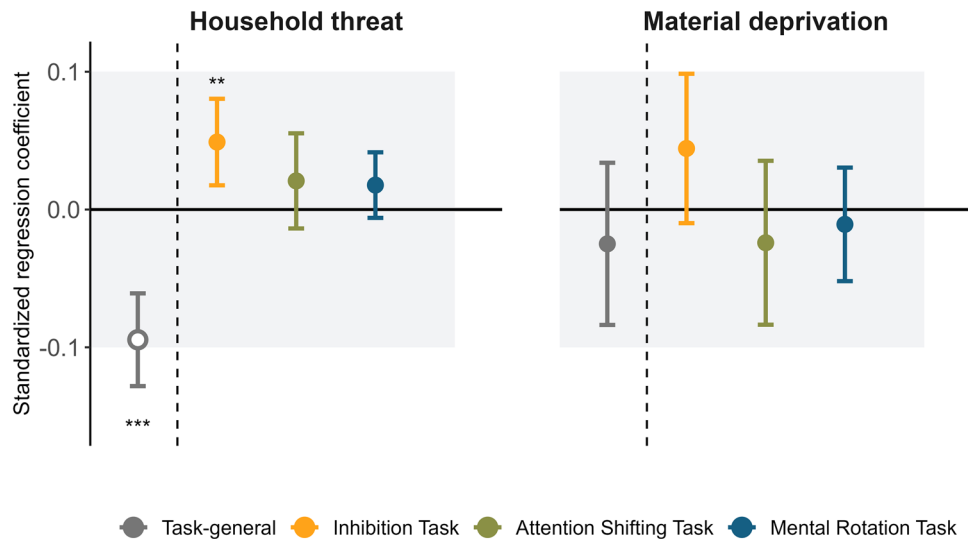


FIGURE 6 Exploratory analysis testing the association between household threat and material deprivation on task-specific and task-general raw performance measures. The gray area reflects the area of practical equivalence. Hollow points indicate effects outside the area of practical equivalence. Solid points indicate effects inside the area of practical equivalence. Standard-errors represent 95% confidence intervals. Statistical significance (tested against zero) is indicated with significance stars. *** $p < 0.001$, ** $p < 0.01$, * $p < 0.05$.

We used the measures as provided in the ABCD database (Luciana et al., 2018). For the Processing Speed Task, the traditional raw measure is the number of correctly completed trials. For the Mental Rotation Task, the traditional raw measure is the percentage correct divided by the mean response time on correct trials. For the Attention Shifting and Inhibition Task, the traditional raw measure is a composite of accuracy and RT (Slotkin et al., 2012). The model was the same as the primary analysis, with the exception that it included only one task-general factor. Like the primary models, the exploratory model provided a good account of the test data (CFI = 1, RMSEA = 0.04).

The results are summarized in Figure 6. Similarly to the primary analysis, household threat was significantly negatively associated with task-general performance. In addition, we found a significant—but practically equivalent—positive association between household threat and task-specific Flanker performance. All of the other effects were practically equivalent at different levels of adversity.

4 | DISCUSSION

Our aim was to better understand how two types of adversity—household threat and material deprivation—are associated with performance differences on three tasks covering inhibition, attention shifting, and mental rotation. First, we used DDM to distinguish between three potential sources for performance differences: 1) the speed of information processing (drift rates), 2) response caution (boundary separation), and 3) the speed of encoding and response execution (non-decision time). Second, we used SEM to investigate if observed differences in each DDM parameter were task-general (i.e., shared across all tasks) or task-specific (i.e., unique to a specific task). Negative associations between adversity and either task-general or task-specific drift rates would be consistent with existing deficit frame-

works. Positive associations between adversity and task-specific drift rates would be consistent with existing adaptation frameworks. In contrast, associations with other DDM parameters, or equivalent drift rates, would not be consistent with either framework.

4.1 | Primary findings

Our results provided some support for deficit frameworks, but not for adaptation frameworks. Higher levels of household threat (but not material deprivation) were associated with lower task-general speed of information processing. This was consistent with deficit frameworks, although based on previous literature, we actually expected stronger deficit patterns for deprivation than for threat (Salhi et al., 2021; Sheridan & McLaughlin, 2014; Sheridan et al., 2020). Inconsistent with either deficit or adaptation frameworks, task-specific inhibition and mental rotation abilities were intact. The only exception was the negative association between material deprivation and attention shifting, where we did not find evidence for a significant attention shifting difference, nor for truly intact shifting. Finally, both household threat and material deprivation led to more response caution, although the evidence for material deprivation was weak (not significantly different from zero, but also not practically equivalent to zero). We did not find any differences in task-general or task-specific aspects of task preparation and response execution.

The finding that most task-specific abilities—after accounting for task-general processing speed—were not affected by either type of adversity was striking in light of the existing literature. It suggests that specific executive functions (i.e., inhibition, attention shifting, mental rotation) of youth with more adversity exposure were comparable with those of youth from low-adversity contexts. This is inconsistent with previous interpretations of adversity-related performance differences

based on raw performance measures. For example, a previous study showed enhanced attention-shifting performance in youth with more exposure to threat (Young et al., 2022; for similar findings with environmental and caregiver unpredictability, see Fields et al., 2021; Mittal et al., 2015). In addition, youth from adversity have previously been found to perform worse on inhibition tasks (Farah et al., 2006; Fields et al., 2021; Mezzacappa, 2004; Mittal et al., 2015; Noble et al., 2005), and previous investigations in the ABCD study found negative associations between SES and mental rotation (Assari, 2020; Bignardi et al., 2023).

Instead, higher levels of household threat were associated with a lower task-general drift rate. We argue that this is likely to reflect a slower basic speed of processing for three reasons. First, previous studies showed that performance on executive functioning tasks involves basic processing speed (Frischkorn et al., 2019), with one study suggesting that it may be the predominant factor explaining individual differences on executive functioning tasks (Löffler et al., 2022). Second, we included a simple Processing Speed Task to inform and scale each task-general factor. Third, the drift rates of the Flanker and Attention Shifting Task were collapsed across incongruent (switch) and congruent (repeat) trials. Thus, it is likely that the task-general drift rate accounted not only for variance related to incongruent (shift) trials, but also for variance related to the congruent (repeat) trials, which are generally thought to involve mostly basic processing. While we consider the basic processing speed interpretation most likely given these reasons, we note that others have proposed that shared variance among executive functioning tasks predominantly reflects executive attention, or the ability to avoid distraction and to focus and maintain attention (Mashburn et al., 2023; Zelazo & Carlson, 2023). More research is warranted to test these two hypotheses against each other.

Our results align to some extent with two recent investigations. First, Bignardi et al. (2023) conducted a study in three large datasets—among which the ABCD study—in which they used SEM to separate task-general variance from task-specific variance. They found that SES was positively associated with lower task-general performance in all datasets, but after accounting for task-general performance, found many instances of practically equivalent performance. Interestingly, they found negative associations (meaning better performance) between SES and the Flanker and Attention Shifting Task in the ABCD data. Second, Young et al. (Under review) examined associations between SES and unpredictability with performance on an achievement task battery, comparing specific subtasks to overall performance across tasks. Similar to our findings, lower SES was associated with lower overall performance, but with intact (or even enhanced) performance on most specific subtasks, relative to the overall effect. However, these studies did not separate cognitive abilities from other processes such as response caution.

Household threat (and to a lesser extent material deprivation) was also associated with more task-general response caution. Traditional assessments could misinterpret this as impaired ability, as it slows down responses. In contrast, task-specific response caution was lower for the Attention Shifting and Inhibition Task (although the latter was practically equivalent). Thus, youth with more exposure to household

threat are generally more cautious, but become less cautious specifically when processing conflicting information (i.e., distractions on the Inhibition Task and changing task-demands on the Attention Shifting Task). What might explain these differences? In comparing deficit and adaptation frameworks, we focused mainly on cognitive abilities with a clear performance benchmark (e.g., higher drift rates reflecting better performance). Differences in response caution reflect strategies, not abilities (Frankenhuis et al., 2020). However, we speculate that these findings could reflect contextually appropriate adaptive responses to threatening conditions. Evidence across multiple species suggests that a high probability of threat tends to increase general response caution (prioritizing accuracy over speed), to avoid costly mistakes (Chittka et al., 2009). However, under acute threat, prioritizing speed over accuracy might be better (e.g., fleeing even though there was no threat). Although the Inhibition and Attention Shifting Task did not signal threat, they did evoke competing demands and conflicting information. In real-life settings, such environmental cues could signal a threat, in which case prioritizing speed over accuracy would facilitate rapid detection and responding (Frankenhuis et al., 2016; Mittal et al., 2015). However, as neither pattern was preregistered, we should calibrate our interpretations accordingly.

4.2 | Strengths, limitations, and future directions

The current study has several strengths. First, the analyses were based on the ABCD sample, a large, representative US sample. Second, we developed a framework that can simultaneously account for adversity-related impairments and enhancements and captures cognitive processes that are more theoretically meaningful than raw scores. Third, we used measures of material deprivation and household threat that were corrected for measurement non-invariance using MNLFA, resulting in unbiased estimates of both dimensions of adversity.

The current study also had limitations. First, we were only able to include three cognitive abilities (aside from processing speed) that were compatible with DDM assumptions. This inevitably excluded many important abilities, which limited the scope of what is captured both in task-general and task-specific processes. Second, because of the low number of trials per task we were unable to separately model the task conditions of the Flanker and Attention Shifting Task. This may have made the task-specific estimates less precise measures of inhibition and attention shifting. Third, despite the enhanced individual variation gained from the MNLFA scores, items composing those scores of household threat and material deprivation were binary, asking for the presence or absence of certain exposures over the last 12 months. Therefore, we were not able to account for the role of frequency and severity of those experiences in that window (let alone over the whole of ontogeny). Fourth, while household threat was child-reported, material deprivation was parent-reported. Thus, the measure of material deprivation might not have fully captured youths' own subjective perception, which may partly explain why household threat was more strongly related to cognitive performance than material deprivation.



Future research can build on this study in a couple of ways. First, it will be important to better understand the processes making up task-general drift rate. To this end, future research should include measures of candidate processes (e.g., basic processing speed, attention maintenance), ideally several measures per process to obtain good latent estimates. In addition, neuro imaging data could be linked directly to DDM parameters to investigate which brain networks are associated with differences in task-general drift rates (e.g., Schubert & Frischkorn, 2020). Second, future research could aim to better understand task-general and task-specific differences in response caution. For example, do youth from adversity show more task-general response caution due to performance anxiety? If so, does such anxiety interfere more with their performance on some tasks than others? Can training programs targeting anxiety boost their performance? Third, our approach could be extended to model developmental trajectories of the cognitive processes as a function of adversity.

Our approach of combining DDM and SEM can also enrich perspectives that promote using culturally sensitive assessments of executive functioning that relate better to youths pre-existing goals, values, and lived experiences (Doebel, 2020; Miller-Cotto et al., 2022; Niebaum & Munakata, 2023; Nketia et al., 2023; Zuilkowski et al., 2016; also see Zelazo & Carlson, 2023). We agree that more ecologically relevant assessments are needed, but, to the extent that they also rely on response times and accuracy, will suffer from some of the same methodological limitations as traditional tasks. This is exemplified by recent attempts to make task-content more ecologically relevant. While promising, the effects are sometimes difficult to interpret, with different types of content affecting performance in unexpected and inconsistent ways—in some cases helping and in others hindering performance. For instance, testing materials involving money can help to close achievement gaps on working memory tasks (Young et al., 2022), but at the same time harm performance on mathematics exams (Duquenois, 2022; Muskens, 2019). This could mean that 1) the effect of these materials on performance is task or domain-specific, and 2) that specific manipulations can have different—even opposing—effects depending on the relevant process. Our approach offers a crucial tool to systematically unpack these differences and to understand how interventions can be best tailored to a child's unique circumstances given a particular cognitive domain.

4.3 | Conclusion

Taken together, we find that adversity is mostly associated with task-general processes, as well as ability-irrelevant response caution, yet that task-specific abilities are mostly intact. This suggests that traditional cognitive assessments may overestimate the effect of adversity on youth's specific abilities (both impairments and enhancements). Our analytical approach provides a solution. By combining DDM and SEM approaches, we can start to develop a more nuanced understanding of how adversity affects different aspects of cognitive performance among youth and across development. This approach requires large datasets containing multiple cognitive tasks, a requirement that is

increasingly feasible with the availability of large, secondary datasets in developmental science (Kievit et al., 2022). Thus, we can develop a more balanced, well-rounded understanding of how adversity shapes cognitive development that integrates both deficit and adaptation perspectives.

ACKNOWLEDGMENTS

WEF's contributions have been supported by the Dutch Research Council (V1.Vidi.195.130) and the James S. McDonnell Foundation (<https://doi.org/10.37717/220020502>) MLD was supported by the National Institute of Child Health and Human Development (NICHD) (1F32HD112065-01).

CONFLICTS OF INTEREST STATEMENT

Authors declare no conflicts of interest.

DATA AVAILABILITY STATEMENT

All scripts and materials needed to reproduce the findings are available on the article's Github repository (https://stefanvermeent.github.io/abcd_ddm/). We also include instructions on how to reproduce each step of our analyses. To ensure computational reproducibility, we provide synthetic (i.e., simulated) data files with the same characteristics as the raw data.

Data used in the preparation of this article were obtained from the Adolescent Brain Cognitive Development (ABCD) Study (<https://abcdstudy.org>), held in the NIMH Data Archive (NDA). This is a multisite, longitudinal study designed to recruit more than 10,000 children age 9–10 and follow them over 10 years into early adulthood. The ABCD Study is supported by the National Institutes of Health and additional federal partners under award numbers U01DA041048, U01DA050989, U01DA051016, U01DA041022, U01DA051018, U01DA051037, U01DA050987, U01DA041174, U01DA041106, U01DA041117, U01DA041028, U01DA041134, U01DA050988, U01DA051039, U01DA041156, U01DA041025, U01DA041120, U01DA051038, U01DA041148, U01DA041093, U01DA041089, U24DA041123, U24DA041147. A full list of supporters is available at <https://abcdstudy.org/federal-partners.html>. A listing of participating sites and a complete listing of the study investigators can be found at https://abcdstudy.org/consortium_members/. ABCD consortium investigators designed and implemented the study and/or provided data but did not necessarily participate in the analysis or writing of this report. This manuscript reflects the views of the authors and may not reflect the opinions or views of the NIH or ABCD consortium investigators. The ABCD data repository grows and changes over time. The ABCD data used in this report came from Data Release 4.0 (DOI: <https://doi.org/10.15154/1523041>).

ETHICS APPROVAL STATEMENT

This study was approved by the Ethics Review Board of the Faculty of Social & Behavioral Sciences of Utrecht University (FETC20-490).

ORCID

Stefan Vermeent  <https://orcid.org/0000-0002-9595-5373>

Ethan S. Young  <https://orcid.org/0000-0002-8232-0184>

Meriah L. DeJoseph  <https://orcid.org/0000-0002-5086-147X>
 Anna-Lena Schubert  <https://orcid.org/0000-0001-7248-0662>
 Willem E. Frankenhuus  <https://orcid.org/0000-0002-4628-1712>

ENDNOTES

- ¹A fourth DDM parameter, the *starting point* (z), represents an initial bias toward one of the two decision options (e.g., a tendency to classify facial expressions as angry that extends to neutral faces). Note that allowing the starting point to vary only makes sense if response options differ in valence (e.g., happy and angry faces, which the current study does not include and thus is unable to examine).
- ²The preregistration also included the Picture Vocabulary Task. However, after accessing the data we realized that this task was implemented using computerized adaptive testing (Luciana et al., 2018). This makes it unsuitable for DDM, as the model assumes the level of difficulty is the same across trials.
- ³We ran parameter recovery studies simulating the data for the Inhibition Task, which has the lowest overall number of trials. Parameter recovery was excellent for the scenario that we planned in our main analyses (all $r_s \geq 0.84$). See the supplemental materials for more details.

REFERENCES

- Assari, S. (2020). Mental rotation in American children: Diminished returns of parental education in black families. *Pediatric Reports*, 12(3), 130–141. <https://doi.org/10.3390/pediatric12030028>
- Bauer, D. J. (2017). A more general model for testing measurement invariance and differential item functioning. *Psychological Methods*, 22, 507–526. <https://doi.org/10.1037/met0000077>
- Benjamini, Y., & Hochberg, Y. (1995). Controlling the false discovery rate: A practical and powerful approach to multiple testing. *Journal of the Royal Statistical Society: Series B (Methodological)*, 57(1), 289–300. <https://doi.org/10.1111/j.2517-6161.1995.tb02031.x>
- Bignardi, G., Mareva, S., & Astle, D. E. (2023). Parental socioeconomic status weakly predicts specific cognitive and academic skills beyond general cognitive ability. *Developmental Science*, e13451. <https://doi.org/10.1111/desc.13451>
- Blakemore, S.-J., & Choudhury, S. (2006). Development of the adolescent brain: Implications for executive function and social cognition. *Journal of Child Psychology and Psychiatry, and Allied Disciplines*, 47(3-4), 296–312. <https://doi.org/10.1111/j.1469-7610.2006.01611.x>
- Carlozzi, N. E., Beaumont, J. L., Tulsky, D. S., & Gershon, R. C. (2015). The NIH toolbox pattern comparison processing speed test: Normative data. *Archives of Clinical Neuropsychology*, 30(5), 359–368. <https://doi.org/10.1093/arclin/acv031>
- Chittka, L., Skorupski, P., & Raine, N. E. (2009). Speed-accuracy tradeoffs in animal decision making. *Trends in Ecology & Evolution*, 24(7), 400–407. <https://doi.org/10.1016/j.tree.2009.02.010>
- Cribbie, R. A. (2007). Multiplicity control in structural equation modeling. *Structural Equation Modeling: A Multidisciplinary Journal*, 14(1), 98–112. <https://doi.org/10.1080/10705510709336738>
- Curran, P. J., McGinley, J. S., Bauer, D. J., Hussong, A. M., Burns, A., Chassin, L., Sher, K., & Zucker, R. (2014). A moderated nonlinear factor model for the development of commensurate measures in integrative data analysis. *Multivariate Behavioral Research*, 49(3), 214–231. <https://doi.org/10.1080/00273171.2014.889594>
- DeJoseph, M. L., Herzberg, M. P., Sifre, R. D., Berry, D., & Thomas, K. M. (2022). Measurement matters: An individual differences examination of family socioeconomic factors, latent dimensions of children's experiences, and resting state functional brain connectivity in the ABCD sample. *Developmental Cognitive Neuroscience*, 53, 101043. <https://doi.org/10.1016/j.dcn.2021.101043>
- Diemer, M. A., Mistry, R. S., Wadsworth, M. E., López, I., & Reimers, F. (2013). Best practices in conceptualizing and measuring social class in psychological research. *Analyses of Social Issues and Public Policy*, 13(1), 77–113. <https://doi.org/10.1111/asap.12001>
- Distefano, R., Fiat, A. E., Merrick, J. S., Slotkin, J., Zelazo, P. D., Carlson, S. M., & Masten, A. S. (2021). NIH toolbox executive function measures with developmental extensions: Reliability and validity with preschoolers in emergency housing. *Child Neuropsychology*, 27(6), 709–717. <https://doi.org/10.1080/09297049.2021.1888905>
- Doebel, S. (2020). Rethinking executive function and its development. *Perspectives on Psychological Science*, 15(4), 942–956. <https://doi.org/10.1177/1745691620904771>
- Duquenois, C. (2022). Fictional money, real costs: Impacts of financial salience on disadvantaged students. *American Economic Review*, 112(3), 798–826. <https://doi.org/10.1257/aer.20201661>
- Ellis, B. J., Abrams, L., Masten, A., Sternberg, R., Tottenham, N., & Frankenhuus, W. (2022). Hidden talents in harsh environments. *Development and Psychopathology*, 34(1) 95–113. <https://doi.org/10.1017/S0954579420000887>
- Farah, M. J., Shera, D. M., Savage, J. H., Betancourt, L., Giannetta, J. M., Brodsky, N. L., Malmud, E. K., & Hurt, H. (2006). Childhood poverty: Specific associations with neurocognitive development. *Brain Research*, 1110(1), 166–174. <https://doi.org/10.1016/j.brainres.2006.06.072>
- Fields, A., Bloom, P. A., VanTieghem, M., Harmon, C., Choy, T., Camacho, N. L., Gibson, L., Umbach, R., Heleniak, C., & Tottenham, N. (2021). Adaptation in the face of adversity: Decrements and enhancements in children's cognitive control behavior following early caregiving instability. *Developmental Science*, 24(6), e13133. <https://doi.org/10.1111/desc.13133>
- Forstmann, B. U., Ratcliff, R., & Wagenmakers, E.-J. (2016). Sequential sampling models in cognitive neuroscience: Advantages, applications, and extensions. *Annual Review of Psychology*, 67(1), 641–666. <https://doi.org/10.1146/annurev-psych-122414-033645>
- Frankenhuus, W. E., Panchanathan, K., & Nettle, D. (2016). Cognition in harsh and unpredictable environments. *Current Opinion in Psychology*, 7, 76–80. <https://doi.org/10.1016/j.copsyc.2015.08.011>
- Frankenhuus, W. E., & Weerth, C. de. (2013). Does early-life exposure to stress shape or impair cognition? *Current Directions in Psychological Science*, 22(5), 407–412. <https://doi.org/10.1177/0963721413484324>
- Frankenhuus, W. E., Young, E. S., & Ellis, B. J. (2020). The hidden talents approach: Theoretical and methodological challenges. *Trends in Cognitive Sciences*, 24(7), 569–581. <https://doi.org/10.1016/j.tics.2020.03.007>
- Frischkorn, G. T., Schubert, A.-L., & Hagemann, D. (2019). Processing speed, working memory, and executive functions: Independent or inter-related predictors of general intelligence. *Intelligence*, 75, 95–110. <https://doi.org/10.1016/j.intell.2019.05.003>
- Garavan, H., Bartsch, H., Conway, K., Decastro, A., Goldstein, R. Z., Heeringa, S., Jernigan, T., Potter, A., Thompson, W., & Zabs, D. (2018). Recruiting the ABCD sample: Design considerations and procedures. *Developmental Cognitive Neuroscience*, 32, 16–22. <https://doi.org/10.1016/j.dcn.2018.04.004>
- Heeringa, S. G., & Berglund, P. A. (2020). A guide for population-based analysis of the Adolescent Brain Cognitive Development (ABCD) study baseline data. bioRxiv. <https://doi.org/10.1101/2020.02.10.942011>
- Hu, L., & Bentler, P. M. (1999). Cutoff criteria for fit indexes in covariance structure analysis: Conventional criteria versus new alternatives. *Structural Equation Modeling*, 6, 1–55. <https://doi.org/10.1080/10705519909540118>
- Johnson, D. J., Hopwood, C. J., Cesario, J., & Pleskac, T. J. (2017). Advancing research on cognitive processes in social and personality psychology: A hierarchical drift diffusion model primer. *Social Psychological and Personality Science*, 8(4), 413–423. <https://doi.org/10.1177/1948550617703174>
- Kievit, R. A., McCormick, E. M., Fuhrmann, D., Deserno, M. K., & Orben, A. (2022). Using large, publicly available data sets to study adolescent development: Opportunities and challenges. *Current Opinion in Psychology*, 44, 303–308. <https://doi.org/10.1016/j.copsyc.2021.10.003>



- Lerche, V., von Krause, M., Voss, A., Frischkorn, G. T., Schubert, A.-L., & Hagemann, D. (2020). Diffusion modeling and intelligence: Drift rates show both domain-general and domain-specific relations with intelligence. *Journal of Experimental Psychology: General*, 149(12), 2207–2249. <https://doi.org/10.1037/xge0000774>
- Löffler, C., Frischkorn, G. T., Hagemann, D., Sadus, K., & Schubert, A.-L. (2022). The common factor of executive functions measures nothing but speed of information uptake. *PsyArXiv*. <https://doi.org/10.31234/osf.io/xvdyz>
- Luciana, M., Bjork, J. M., Nagel, B. J., Barch, D. M., Gonzalez, R., Nixon, S. J., & Banich, M. T. (2018). Adolescent neurocognitive development and impacts of substance use: Overview of the adolescent brain cognitive development (ABCD) baseline neurocognition battery. *Developmental Cognitive Neuroscience*, 32, 67–79. <https://doi.org/10.1016/j.dcn.2018.02.006>
- Mashburn, C. A., Barnett, M. K., & Engle, R. W. (2023). Processing speed and executive attention as causes of intelligence. *Psychological Review*, <https://doi.org/10.1037/rev0000439>
- McLaughlin, K. A., Sheridan, M. A., Humphreys, K. L., Belsky, J., & Ellis, B. J. (2021). The value of dimensional models of early experience: Thinking clearly about concepts and categories. *Perspectives on Psychological Science*, 16(6), 1463–1472. <https://doi.org/10.1177/1745691621992346>
- Mezzacappa, E. (2004). Alerting, orienting, and executive attention: Developmental properties and sociodemographic correlates in an epidemiological sample of young, urban children. *Child Development*, 75(5), 1373–1386. <https://doi.org/10.1111/j.1467-8624.2004.00746.x>
- Miller-Cotto, D., Smith, L. V., Wang, A. H., & Ribner, A. D. (2022). Changing the conversation: A culturally responsive perspective on executive functions, minoritized children and their families. *Infant and Child Development*, 31(1), e2286. <https://doi.org/10.1002/icd.2286>
- Mittal, C., Griskevicius, V., Simpson, J. A., Sung, S., & Young, E. S. (2015). Cognitive adaptations to stressful environments: When childhood adversity enhances adult executive function. *Journal of Personality and Social Psychology*, 109(4), 604–621. <https://doi.org/10.1037/pspi0000028>
- Moos, R. H. (1994). *Family environment scale manual: development, applications, research*. Consulting Psychologists Press.
- Muskens, M. M. E. (2019). *Hidden obstacles in education for students from low socioeconomic backgrounds* [PhD thesis, Maastricht University]. <https://doi.org/10.26481/dis.20191115mm>
- Niebaum, J. C., & Munakata, Y. (2023). Why Doesn't Executive function training improve academic achievement? Rethinking individual differences, relevance, and engagement from a contextual framework. *Journal of Cognition and Development*, 24(2), 241–259. <https://doi.org/10.1080/15248372.2022.2160723>
- Nketia, J., Sager, A. A., Dajani, R., Placido, D., & Amso, D. (2023). Executive functions in Jordanian children: What can the hearts and flowers task tell us about development in a non-Western context. *Journal of Cognition and Development*, 1–21. <https://doi.org/10.1080/15248372.2023.2248698>
- Noble, K. G., Norman, M. F., & Farah, M. J. (2005). Neurocognitive correlates of socioeconomic status in kindergarten children. *Developmental Science*, 8(1), 74–87. <https://doi.org/10.1111/j.1467-7687.2005.00394.x>
- Nweze, T., Nwoke, M. B., Nwufo, J. I., Aniekwu, R. I., & Lange, F. (2021). Working for the future: Parentally deprived Nigerian children have enhanced working memory ability. *Journal of Child Psychology and Psychiatry*, 62(3), 280–288. <https://doi.org/10.1111/jcpp.13241>
- Oberski, D. (2014). Llavaan.survey: An R package for complex survey analysis of structural equation models. *Journal of Statistical Software*, 57(1), 1–27. <https://doi.org/10.18637/jss.v057.i01>
- Pollak, S. D. (2008). Mechanisms linking early experience and the emergence of emotions: Illustrations from the study of maltreated children. *Current Directions in Psychological Science*, 17(6), 370–375. <https://doi.org/10.1111/j.1467-8721.2008.00608.x>
- Ratcliff, R., & McKoon, G. (2008). The diffusion decision model: Theory and data for two-choice decision tasks. *Neural Computation*, 20(4), 873–922. <https://doi.org/10.1162/neco.2008.12-06-420>
- Ratcliff, R., & Rouder, J. N. (1998). Modeling response times for two-choice decisions. *Psychological Science*, 9(5), 347–356. <https://doi.org/10.1111/1467-9280.00067>
- Rosseel, Y. (2012). Llavaan: An R package for structural equation modeling. *Journal of Statistical Software*, 48, 1–36. <https://doi.org/10.18637/jss.v048.i02>
- Salhi, C., Beatriz, E., McBain, R., McCoy, D., Sheridan, M., & Fink, G. (2021). Physical discipline, deprivation, and differential risk of developmental delay across 17 countries. *Journal of the American Academy of Child & Adolescent Psychiatry*, 60(2), 296–306. <https://doi.org/10.1016/j.jaac.2020.02.016>
- Schäfer, J. L., McLaughlin, K. A., Manfro, G. G., Pan, P., Rohde, L. A., Miguel, E. C., Simioni, A., Hoffmann, M. S., & Salum, G. A. (2022). Threat and deprivation are associated with distinct aspects of cognition, emotional processing, and psychopathology in children and adolescents. *Developmental Science*, 26(1), e13267. <https://doi.org/10.1111/desc.13267>
- Schmiedek, F., Oberauer, K., Wilhelm, O., Süß, H.-M., & Wittmann, W. (2007). Individual differences in components of reaction time distributions and their relations to working memory and intelligence. *Journal of Experimental Psychology: General*, 136, 414–429. <https://doi.org/10.1037/0096-3445.136.3.414>
- Schubert, A.-L., & Frischkorn, G. T. (2020). Neurocognitive psychometrics of intelligence: How measurement advancements unveiled the role of mental speed in intelligence differences. *Current Directions in Psychological Science*, 29(2), 140–146. <https://doi.org/10.1177/0963721419896365>
- Sheridan, M. A., & McLaughlin, K. A. (2014). Dimensions of early experience and neural development: Deprivation and threat. *Trends in Cognitive Sciences*, 18(11), 580–585. <https://doi.org/10.1016/j.tics.2014.09.001>
- Sheridan, M. A., Mukerji, C. E., Wade, M., Humphreys, K. L., Garrisi, K., Goel, S., Patel, K., Fox, N. A., Zeanah, C. H., Nelson, C. A., & McLaughlin, K. A. (2022). Early deprivation alters structural brain development from middle childhood to adolescence. *Science Advances*, 8(40), eabn4316. <https://doi.org/10.1126/sciadv.abn4316>
- Sheridan, M. A., Shi, F., Miller, A. B., Salhi, C., & McLaughlin, K. A. (2020). Network structure reveals clusters of associations between childhood adversities and development outcomes. *Developmental Science*, 23(5), e12934. <https://doi.org/10.1111/desc.12934>
- Slotkin, J., Kallen, M., Griffith, J., Magasi, S., Salsman, J., & Nowinski, C. (2012). *NIH toolbox. Technical manual*.
- R Core Team. (2021). *R: A language and environment for statistical computing*. R Foundation for Statistical Computing, Vienna, Austria. <https://www.R-project.org/>
- Tibu, F., Sheridan, M. A., McLaughlin, K. A., Nelson, C. A., Fox, N. A., & Zeanah, C. H. (2016). Disruptions of working memory and inhibition mediate the association between exposure to institutionalization and symptoms of attention deficit hyperactivity disorder. *Psychological Medicine*, 46(3), 529–541. <https://doi.org/10.1017/S0033291715002020>
- Vandekerckhove, J., Tuerlinckx, F., & Lee, M. D. (2011). Hierarchical diffusion models for two-choice response times. *Psychological Methods*, 16(1), 44–62. <https://doi.org/10.1037/a0021765>
- Voss, A., Nagler, M., & Lerche, V. (2013). Diffusion models in experimental psychology: A practical introduction. *Experimental Psychology*, 60(6), 385–402. <https://doi.org/10.1027/1618-3169/a000218>
- Voss, A., Rothermund, K., & Voss, J. (2004). Interpreting the parameters of the diffusion model: An empirical validation. *Memory & Cognition*, 32(7), 1206–1220. <https://doi.org/10.3758/BF03196893>
- Wagenmakers, E.-J. (2009). Methodological and empirical developments for the Ratcliff diffusion model of response times and accuracy. *European Journal of Cognitive Psychology*, 21(5), 641–671. <https://doi.org/10.1080/09541440802205067>
- Wiecki, T. V., Sofer, I., & Frank, M. J. (2013). HDDM: Hierarchical Bayesian estimation of the drift-diffusion model in python. *Frontiers in Neuroinformatics*, 7, 14. <https://doi.org/10.3389/fninf.2013.00014>
- Young, E. S., Frankenhuys, W. E., DelPriore, D. J., & Ellis, B. J. (2022). Hidden talents in context: Cognitive performance with abstract versus



- ecological stimuli among adversity-exposed youth. *Child Development*, 93(5), 1493–1510. <https://doi.org/10.1111/cdev.13766>
- Young, E. S., Vermeent, S., Frankenhuis, W. E., Nivison, M., Simpson, J. A., & Roisman, G. I. (under review). *How does adversity shape performance across different abilities in the same person?*
- Zelazo, P. D. (2006). The Dimensional Change Card Sort (DCCS): A method of assessing executive function in children. *Nature Protocols*, 1(1), 297–301. <https://doi.org/10.1038/nprot.2006.46>
- Zelazo, P. D., Anderson, J. E., Richler, J., Wallner-Allen, K., Beaumont, J. L., Conway, K. P., Gershon, R., & Weintraub, S. (2014). NIH Toolbox Cognition Battery (CB): Validation of executive function measures in adults. *Journal of the International Neuropsychological Society*, 20(6), 620–629. <https://doi.org/10.1017/S1355617714000472>
- Zelazo, P. D., & Carlson, S. M. (2023). Reconciling the context-dependency and domain-generalty of executive function skills from a developmental systems perspective. *Journal of Cognition and Development*, 24(2), 205–222. <https://doi.org/10.1080/15248372.2022.2156515>
- Zucker, R. A., Gonzalez, R., Feldstein Ewing, S. W., Paulus, M. P., Arroyo, J., Fuligni, A., Morris, A. S., Sanchez, M., & Wills, T. (2018). Assessment of culture and environment in the adolescent brain and cognitive development study: Rationale, description of measures, and early data. *Developmental Cognitive Neuroscience*, 32, 107–120. <https://doi.org/10.1016/j.dcn.2018.03.004>

- Zuilkowski, S. S., McCoy, D. C., Serpell, R., Matafwali, B., & Fink, G. (2016). Dimensionality and the development of cognitive assessments for children in Sub-Saharan Africa. *Journal of Cross-Cultural Psychology*, 47(3), 341–354. <https://doi.org/10.1177/0022022115624155>

SUPPORTING INFORMATION

Additional supporting information can be found online in the Supporting Information section at the end of this article.

How to cite this article: Vermeent, S., Young, E. S., DeJoseph, M. L., Schubert, A.-L., & Frankenhuis, W. E. (2024). Cognitive deficits and enhancements in youth from adverse conditions: An integrative assessment using Drift Diffusion Modeling in the ABCD study. *Developmental Science*, 27, e13478. <https://doi.org/10.1111/desc.13478>